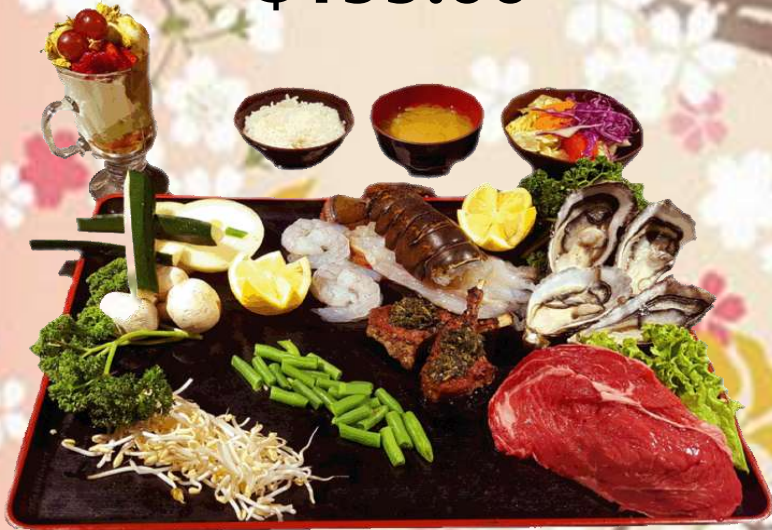


Valentine's Day Special \$155.00



Entrées (x2)

miso soup, salad, appetiser
teppan vegetables and
yum-yum prawns(2)
Steamed Rice (2)

Teppan Mains

Wakanui Steak (180g)
Teriyaki Salmon(2)
Lobster Tail (100g)
Yum-Yum Prawns (4pcs)
fresh oysters (2pcs)

Dessert

Valentine's Matcha Parfait